



Telford & Wrekin
COUNCIL

Contact the Educational Psychology Service:

Telephone: 01952 385216

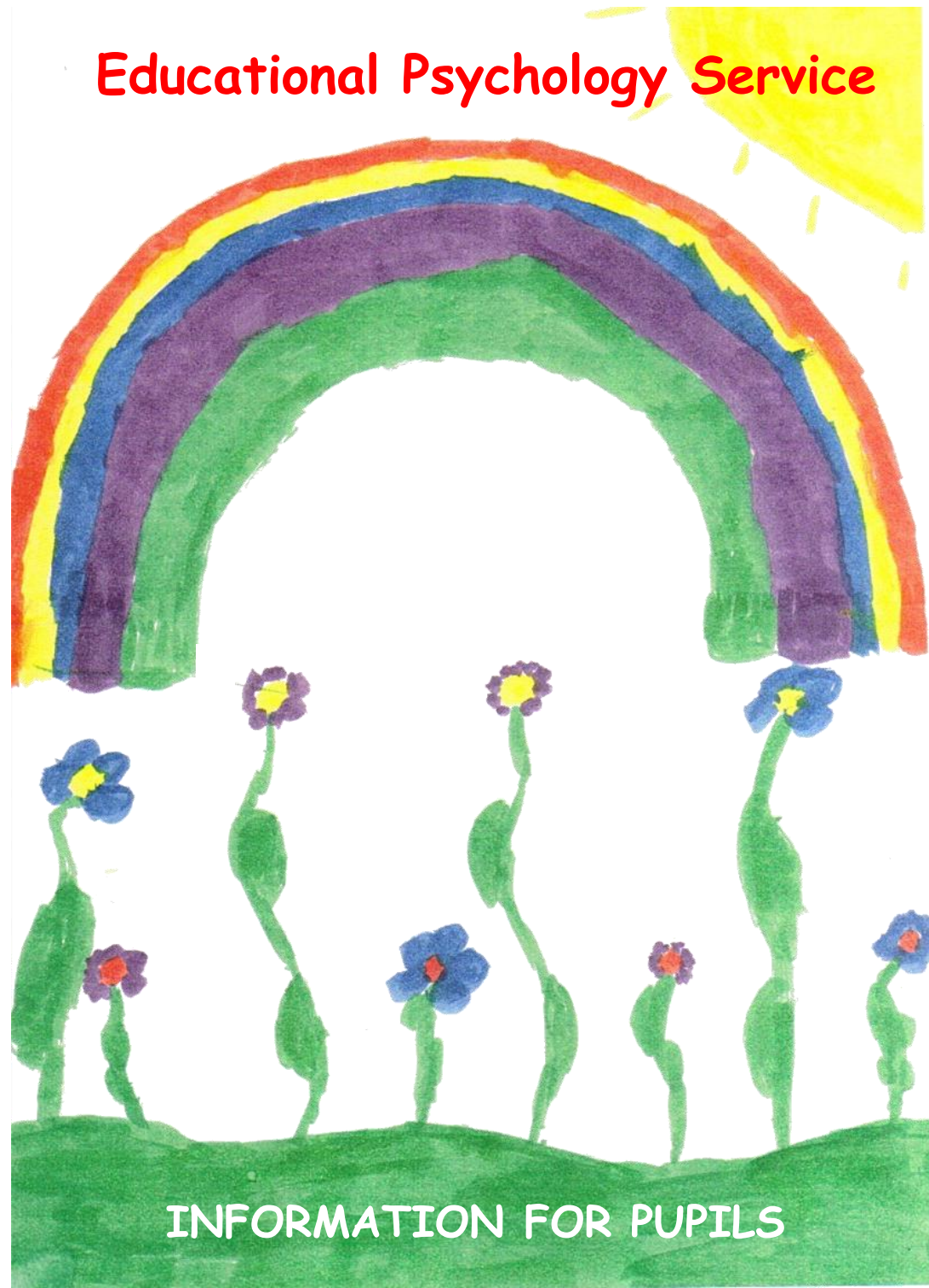
Address: Educational Psychology Service
2nd Floor Darby House
Lawn Central
Telford
Shropshire
TF3 4JA

E-mail: cssadmin@telford.gov.uk

Website: <http://eps.taw.org.uk/>



Educational Psychology Service



INFORMATION FOR PUPILS

Who is the EP?

In school, you work with lots of adults who help you with your work and how you feel.

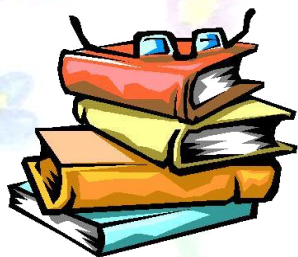
One adult who visits your school is the Educational Psychologist. This is a very long name so you can use EP for short.

The EP is interested in:



How children learn and how you feel

What children like to do and what you think you're good at



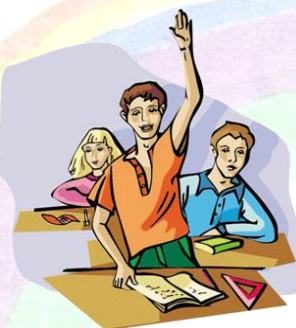
What children think about school

What makes a school a good place to be



Your views on how school could be even better

Sometimes, the EP works with your teacher to help you in school



Sometimes, the EP works with groups of children

The EP might meet with you to talk about school. You can tell him or her how you think and feel. You might do some reading or number work.



The EP might talk with you once or more than once. He or she will work with you, your parents or carers and your teachers to try and make things better for you at school.

If you are worried about meeting the EP, you can talk to your teachers or your parents or carers.

